

LabChip | GX/GXII

Automated Electrophoretic Separations of RNA, DNA and Protein

The LabChip GX and GXII provide fast and easy way to analyze RNA, DNA, and protein samples across a wide range of molecule and fragment sizes. Performing sample analysis with these assays on the LabChip GX/GXII instruments saves time and money by automating the necessary steps for electrophoretic separations. The LabChip GX is designed for both RNA and DNA analysis, while the LabChip GXII runs RNA, DNA, and also protein assays.

The LabChip GX/GXII Electrophoresis Systems use a single sipper microfluidic chip to aspirate samples directly from 96- or 384-well plates. The instrument optics detect samples by laser-induced fluorescence. System software automatically analyzes the data and provides sizing and quantification using ladder and marker calibration standards. Digital data results are immediately available for review or reporting in virtual gel, electropherogram graph, or table summary form.

Features

- Compact Benchtop Footprint
- Runs samples directly from both 96- and 384-well plates
- Automation capable
- Integral barcode scanner
- Complete sample analysis in as little as 30 seconds per sample
- Powerful data collection and analysis software with unlimited licenses
- Data query and sample comparisons via software filters
- Automated data export in friendly formats

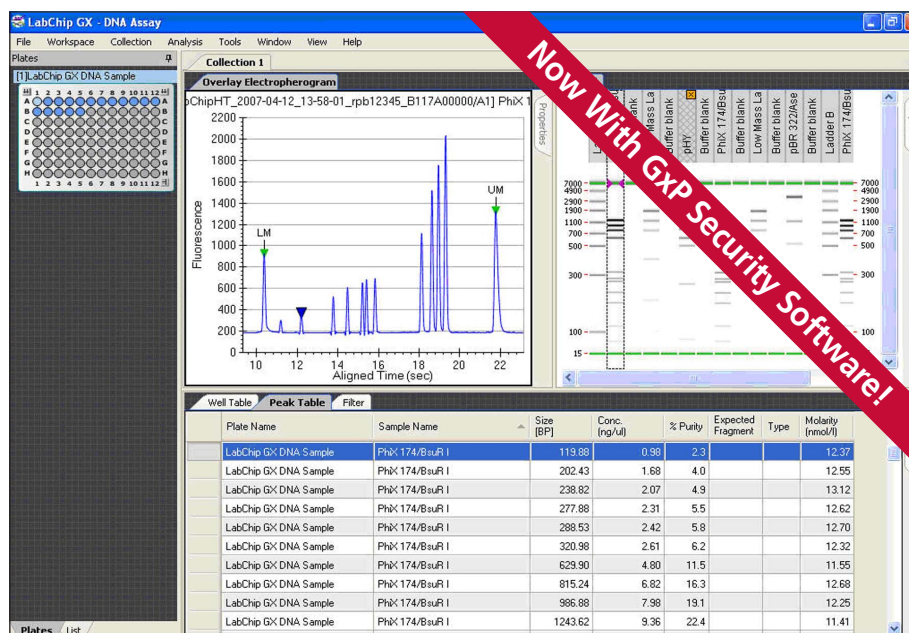
LabChip GX v3 and GxP Security Software

Caliper LabChip GX/GXII instruments with LabChip GxP Software are computerized systems designed to automate the analysis of DNA, RNA or proteins using Caliper Sipper Chip technologies. The systems allow the users to create, modify, and maintain the records in electronic form and allow the users to perform electronic signatures on the records generated from the system. It takes a combination of administrative controls, procedural controls, and technical controls for the users of a computerized system to comply with 21 CFR Part 11 regulations.

The LabChip GxP Software contains built-in technical controls and features specifically designed to support the users for 21 CFR Part 11 compliance. These technical controls and features include user account management and access controls, device check, enforcing permitted sequencing of steps, audit trails, record copying, record retention, system documentation, and electronic signature controls.

Compliance Features:

- User Account Management
- Audit trails
- Electronic Signature Controls
- Central Data Repository



Ordering Information

LabChip GX System	P/N 122000
LabChip GXII System	P/N 124582
DNA 1K Reagent Kit	P/N 760526
DNA 1K Assay Version 2	P/N 760432
DNA 5K Reagent Kit	P/N 760396
DNA 5K Assay Version 2	P/N 760433
DNA 12K Reagent Kit	P/N 760398
DNA 12K Assay Version 2	P/N 760434
RNA Reagent Kit	P/N 760410
RNA Assay Version 2	P/N 760435
Protein Express Reagent Kit	P/N 760328
Protein Express Assay Version 2	P/N 760431
ProfilerPro Glycan Release and Labeling Kit	P/N 760523
HT High Resolution LabChip	P/N 760524
HT Glycan Reagent Kit	P/N 760525

LabChip GX and GXII Specifications

Height	464 mm (18.28 in)
Width	472 mm (18.60 in)
Depth	649 mm (25.57 in)
Weight	45.5 kg (100 lbs)
Temperature Range	18-26 °C (64-79 °F)
Power Requirements	100/110/230 VAC, 50/60 Hz
Power Consumption	460 VA (460 W)
Plate Formats	96- and 384-well
Excitation/Emission Wavelengths	635 and 700 nm
Humidity Range	30-70% relative, non-condensing

Software Ordering Information

LabChip GX Version 3 Software	P/N 128430
LabChip GxP Security Kit	P/N 125416

Note:

Adequate space of 200 mm (8 in) must be provided in front of instrument for plate loading. Right hand side of the instrument must provide sufficient clearance to allow for reagent access.



Tel: 1.508.435.9500
 Email: cust.support@caliperLS.com
www.caliperLS.com

©2010 Caliper Life Sciences, Inc. All rights reserved. Caliper, the Caliper logo and LabChip are trademarks and/or trademarks of Caliper Life Sciences, Inc. All other names are trademarks of their respective companies.

LCGX-DS-04 Oct 10