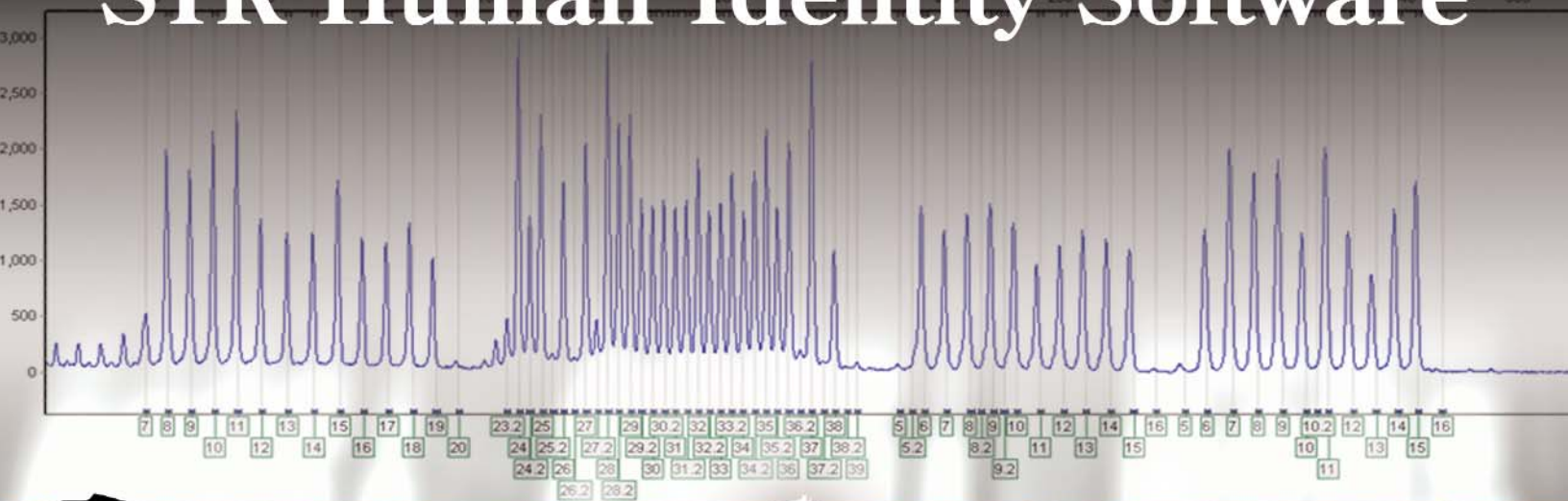


# GeneMarker<sup>®</sup> HID

## STR Human Identity Software



**SOFTGENETICS<sup>®</sup>**

*Software PowerTools for Genetic Analysis*

[www.softgenetics.com](http://www.softgenetics.com)

# GeneMarker® HID

## STR Human Identity Software

*Developed in collaboration with Mitchell Holland, Ph.D.,  
Associate Director of The Pennsylvania State University's Forensic Science Program.*

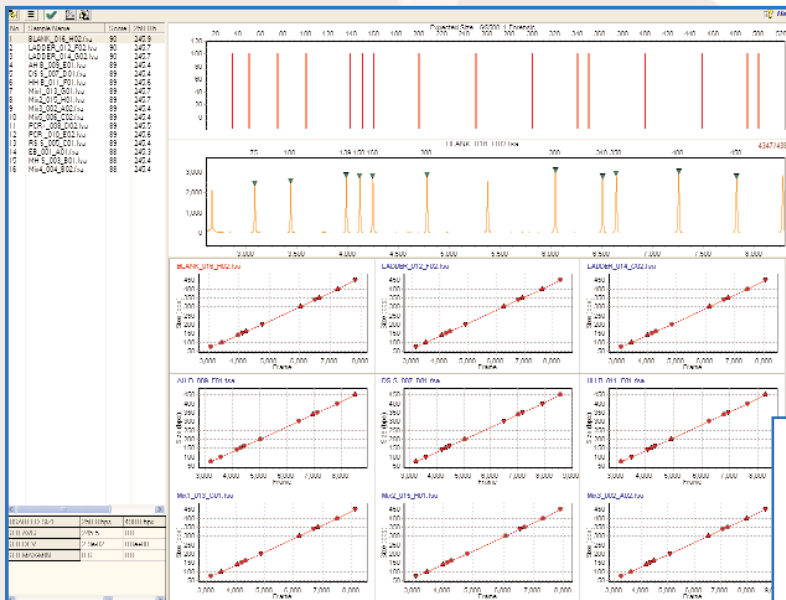
**GeneMarker® HID** is an excellent choice for forensic STR analysis. The software can be employed as a “biologist friendly” replacement for GeneScan®/GenoTyper® or an easy-to-use alternative to GeneMapper® ID.

GeneMarker® HID uses advanced Windows® technology that is intuitive, easy-to-learn and eliminates extraneous mouse clicks. For example, the software incorporates an automatic default to your data file folder, eliminating the frustration of sorting through several file trees.

### Accurate

Advantages of GeneMarker HID are its ease-of-use, enhanced accuracy, analysis speed and robustness. GeneMarker HID employs new, unique sizing algorithms and pattern recognition technology to provide unparalleled accuracy up to 99%. Pattern recognition technology studies peak morphology automatically adjusting for instrument spikes, color pull-up or bleed through, noisy data, saturated peaks, and stutter peaks.

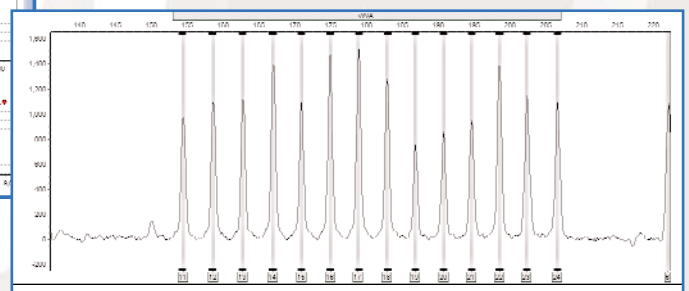
The majority of functions have been completely automated, using a “smart” software approach to eliminate the need for constant analyst intervention, and to improve analysis-to-analysis consistency.



The GeneMarker HID quality assessment tool permits quick visual inspection of sizing quality for each profile. Improperly sized lanes can be quickly marked for re-run or disabled from analysis calculations.

### GeneMarker HID features:

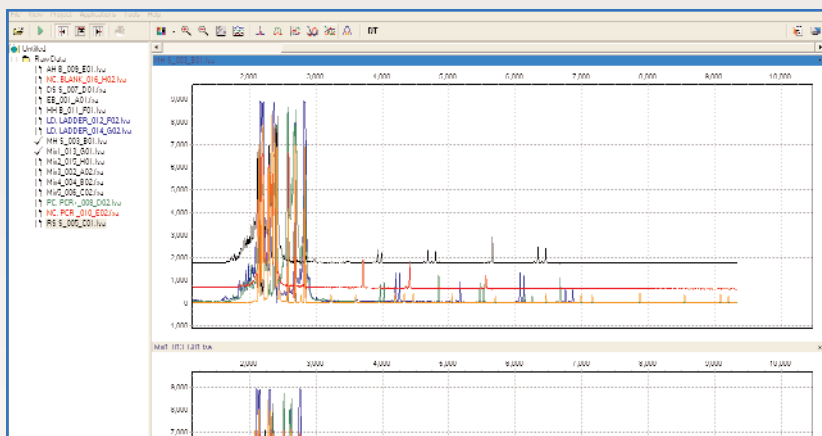
- Enhanced Accuracy
- Rapid Data Processing
- Compatibility with ABI 310/3100/3130
- Embedded ABI and Promega Kit Panels
- RFU Intensity AutoRanging
- Distinct Flag of OL Alleles
- Customizable Panels and Size Standards
- Exportable CODIS and LIMS Reports
- Bulk Printing Capabilities



GeneMarker's graphics indicate bin range by blue brackets, peak center by vertical grey bars and automatically adjust the Y-axis to match peak RFU values.

## Rapid Data Processing, Instrument Correction and Compatibility

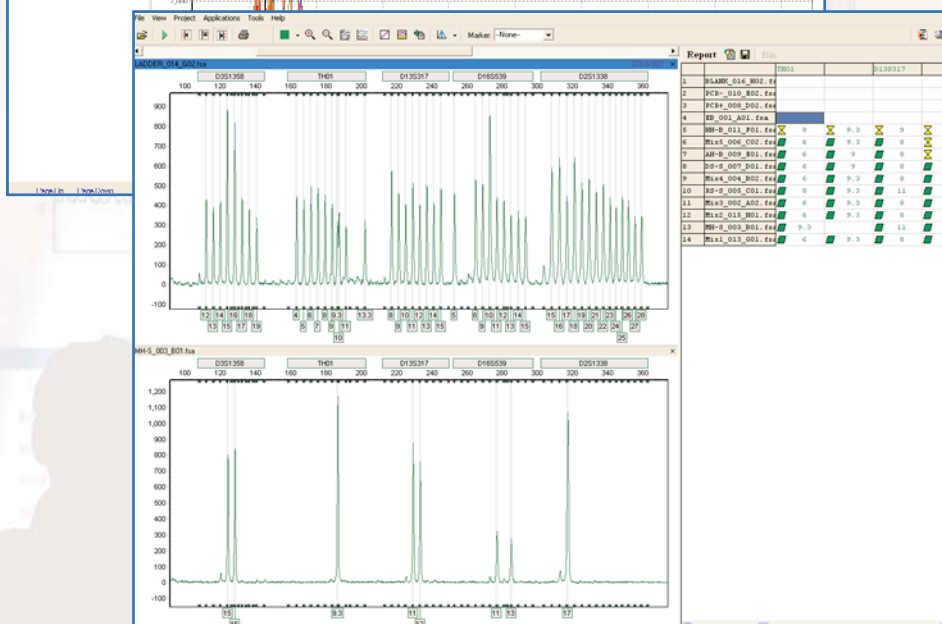
GeneMarker HID performs STR analysis in batches of up to **1,000 profiles in seconds**, and is compatible with all STR Chemistries including Identifiler®, SGM Plus® and PowerPlex16®.



The software accepts output from ABI PRISM® 310/3100/3130 Genetic Analyzer instruments, as well as all other brands of capillary electrophoresis systems.

### Raw Data from ABI Genetic Analyzer System:

GeneMarker HID automatically adjusts for instrument spike, color pullup, noisy data, saturated peaks, and stutter peaks—saving significant analysis time and cost, efficiently analyzing raw STR data within seconds. In addition, GeneMarker HID allows the user to conduct a lane-by-lane overview of unprocessed raw data, permitting a quick quality control assessment of your profiles.

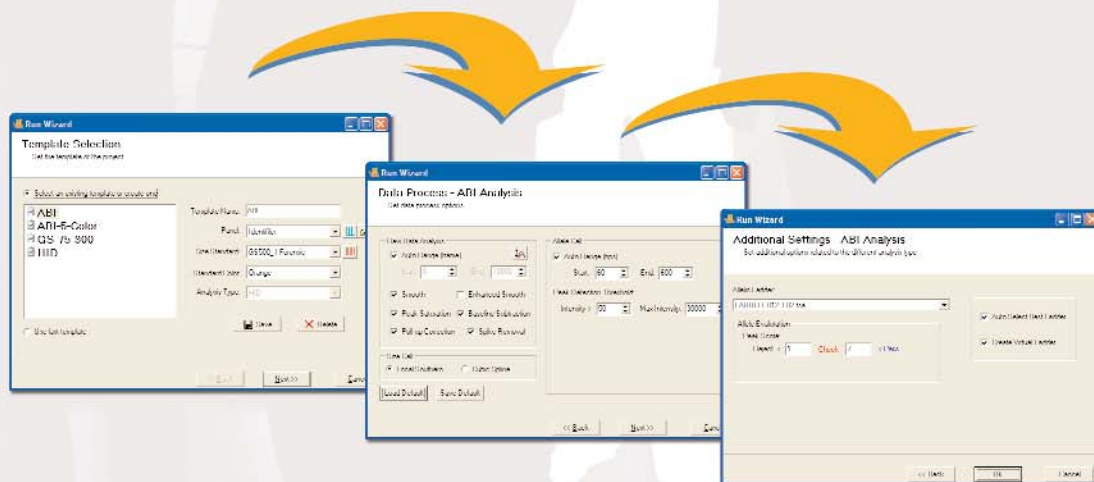


### Processed Profile using Identifiler chemistry:

GeneMarker HID processes up to 1,000 profiles per batch in approximately 2 minutes. Stutter filters can be adjusted by allele; software creates “phantom” bins, and provides “color-coded” quality assessment of each profile, as indicated by yellow and green indicators in the allele report.

## Simple, Easy-To-Use Operation and Analysis Parameter Setting

GeneMarker HID’s Run Wizard utilizes three simple dialogue boxes to set analysis parameters. Once optimized the parameters can be saved for future analysis, utilizing its single click, AutoRun feature.



Setting analysis parameters is accomplished through 3 easy-to-use dialogue boxes. Once parameters have been set, they can be saved for future analysis, allowing “single click” operation of the AutoRun feature.

## User-Friendly Features

A few notable features of GeneMarker HID's analysis window include automatic RFU intensity ranging in the electropherogram; distinct peak flags, and several customizable viewing modes. In addition to a user friendly interface, GeneMarker HID also provides an enhanced quality scoring system that flags suspect alleles and identifies samples that have questionable results.

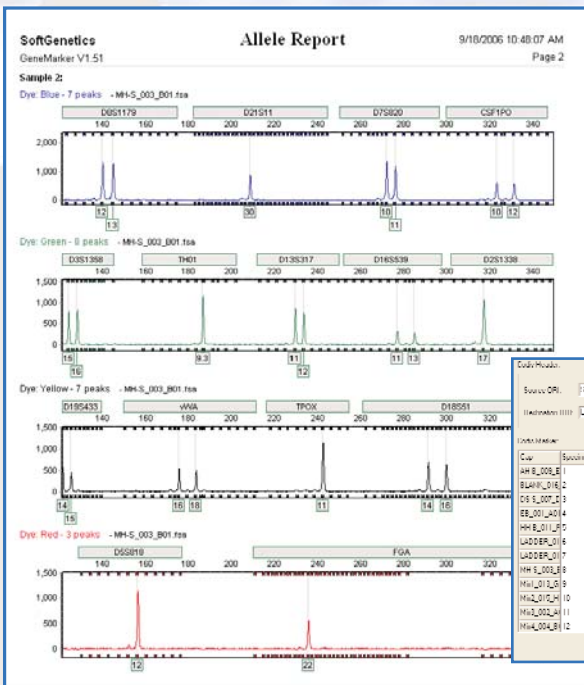
## Customizable Panels and Size Standards

Panel templates and size standards can either be selected from several embedded templates or the user can create and save custom templates. Previously saved ABI panels can also be imported from GeneMapper. Raw data and size calling parameters are also user-definable and once the parameters have been set, they can be saved and called back for future analysis.

## Numerous Printing & Reporting Options

Nearly every function of GeneMarker HID has been automated so that once the template is selected from the menu, or created by the user, the software automatically performs the initial data analysis in preparation for user review. Analysis results can be sorted and manipulated to meet report requirements and then saved as a text file for input into LIMS or other data base systems. CODIS files can be easily generated and exported. In addition, GeneMarker HID will print electropherograms and peak tables in bulk for either all or selected sample sets in a logical, easy-to-read format.

## Customizable Reports

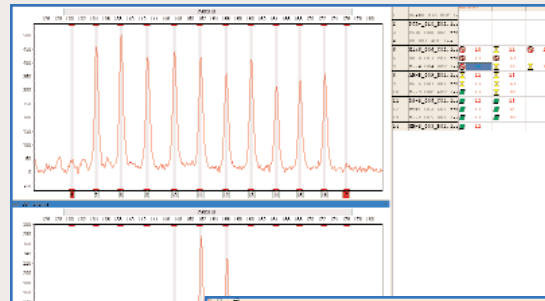


## CODIS Report

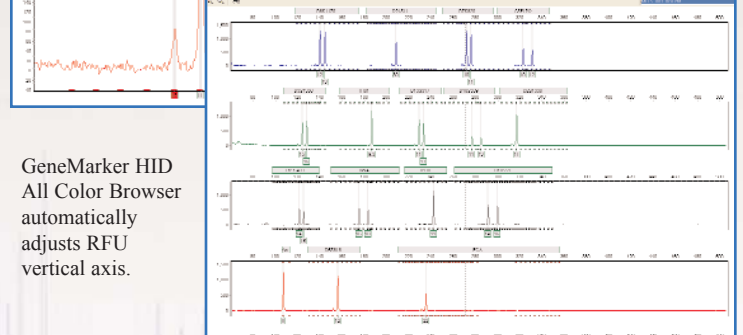
Case Information

Source ORI: [dropdown] Inmate System by ID/Company: [dropdown]  
 Institution: [dropdown] Inmate System: [dropdown] Case Number: [dropdown]

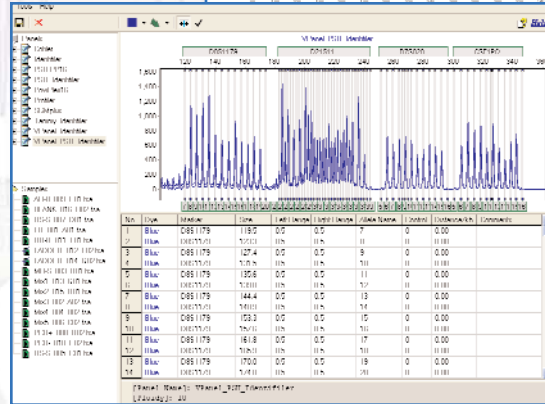
Case	Specimen Name	Specimen Category	Threat Type	Threat Force	Population Group
AM-S_003_B1	CONVICTED OFFENDER	UNSPECIFIED	NOT SPEC	UNSPECIFIED	
AM-S_003_B2	CONVICTED OFFENDER	UNSPECIFIED	NOT SPEC	UNSPECIFIED	
OS-S_003_B3	CONVICTED OFFENDER	UNSPECIFIED	NOT SPEC	UNSPECIFIED	
EE-S_003_B4	CONVICTED OFFENDER	UNSPECIFIED	NOT SPEC	UNSPECIFIED	
HR-S_003_B5	BIOLOGICAL MOTHER	BLOOD	STAIN	UNSPECIFIED	
LADDER_006	CONVICTED OFFENDER	UNSPECIFIED	NOT SPEC	UNSPECIFIED	
LADDER_007	CONVICTED OFFENDER	UNSPECIFIED	NOT SPEC	UNSPECIFIED	
MH-S_003_B8	CONVICTED OFFENDER	UNSPECIFIED	NOT SPEC	UNSPECIFIED	
MH-S_003_B9	CONVICTED OFFENDER	UNSPECIFIED	NOT SPEC	UNSPECIFIED	
MH-S_003_B10	CONVICTED OFFENDER	UNSPECIFIED	NOT SPEC	UNSPECIFIED	
MH-S_003_B11	CONVICTED OFFENDER	UNSPECIFIED	NOT SPEC	UNSPECIFIED	
MH-S_003_B12	CONVICTED OFFENDER	UNSPECIFIED	NOT SPEC	UNSPECIFIED	



GeneMarker HID clearly flags Off Ladder Alleles.



GeneMarker HID All Color Browser automatically adjusts RFU vertical axis.



Import premade ABI panels.

## Ordering Information:

GMHID001 Single User License....\$3,995.00  
 GMHIDN001 Network version  
 & single user license.....\$4,495.00

Additional discounts available for multiple license purchases, please request pricing.

## Minimum System Requirements:

OS: Windows 98, NT, XP  
 Processor: Pentium III, 1 GHz  
 128MB CPU  
 20GB Minimum available hard disk space.

## Interested in trying GeneMarkerHID?

Download a 30-day trial of GeneMarker HID at our website: <http://www.softgenetics.com/downloads.html>

**SOFTGENETICS®**

Suite 235 200 Innovation Blvd State College PA 16803  
 814-237-9340 www.softgenetics.com email: info@softgenetics.com