



SampleScan⁹⁶ Barcode Readers

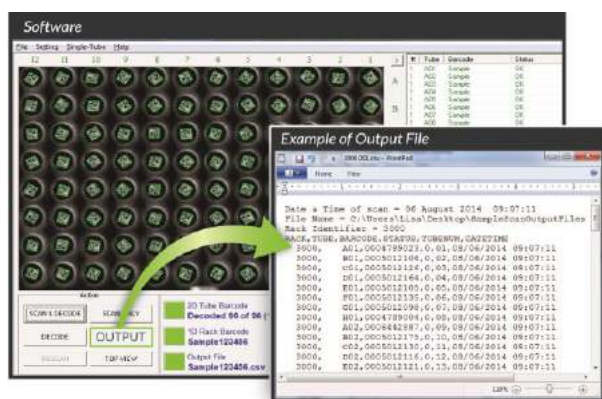
Compatible with the widest variety of labware

Features

- Scans and decodes one rack in 20 seconds
- Single tube scan feature
- Decodes all SBS rack formats
- Rack ID scanning – Automated Model
- Scan Embedded Rack ID
- Integration friendly design
- Auto-rescan feature improves decoding results

Software

- Easy-to-use software scans the tube's 2D barcode and outputs the barcode and rack ID
- Project based workflow allows switching rack formats easily
- Single tube scan displays 2D code on screen and pastes into any open application
- Data output files are user defined and customizable - .csv format
- SDK and ActiveX toolkits are included to enable transfer of output files directly to LIMS or to integrate with other laboratory robotics



Rack ID Scanning

This additional feature is included with the Automated Model pictured on the right (middle).

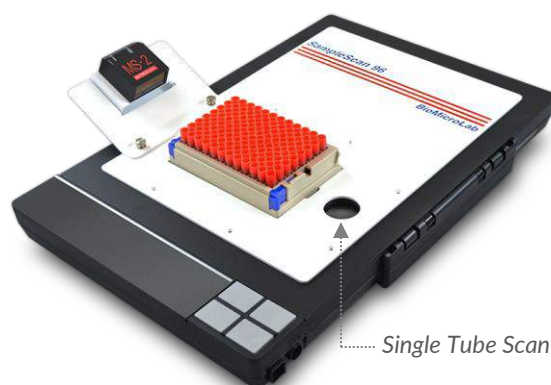
- Scan the one-dimensional rack ID barcode with an integrated MS-2 Reader
- Scan Embedded Rack ID – included

SampleScan 96
Part# BML-1-SS96



SampleScan 96 Automated

Includes MS-2 Reader to capture the rack ID
Part# BML-1-SS96-1D



SampleScan 96 Cryo

Part# BML-1CR-SS96



SampleScan 96 Barcode Readers



Labware Compatibility

- 12, 24, 48, 96, and 384* well SBS racks – all models
 - Honeycomb / High Density Racks
 - 4mL glass vials and 2mL cryovials
 - Cryoboxes (Part no. BML-1CR-SS96)
 - Thermo Scientific (Matrix, ABgene, and Nunc)
 - Wheaton
 - FluidX
 - Greiner
 - Micronic
 - Argos Technologies
 - Non-SBS format racks
 - And more – please inquire
- *384 is labware dependent – please inquire



Decode 81/100
Cryoboxes *and* SBS rack
formats with the
SampleScan 96 Cryo

Not quite what you were looking for?

Your needs may be better met by a different SampleScan model. Review our comparison chart online or call us for a quick chat.

	SampleScan Plus Automated	SampleScan Plus L 16 Automated	SampleScan Plus L 96 Automated	SampleScan 96 L 96 Cops	SampleScan 96 L 16 Automated	
Application	Single Tube Station	Multi-Apparatus for General Lab	Multi-Apparatus for General Lab	Fastest Channel & Slowest Channel Reader	Fastest Channel & Slowest Channel Reader	
Throughput	Single Tube Reader 1 second	Multi-Apparatus 1 second	Multi-Apparatus 1 second	Fastest Channel 1 second	Fastest Channel 1 second	
Barcode Format	1D, 2D, 3D, 4D, 5D, 6D, 7D, 8D, 9D, 10D, 11D, 12D, 13D, 14D, 15D, 16D, 17D, 18D, 19D, 20D, 21D, 22D, 23D, 24D, 25D, 26D, 27D, 28D, 29D, 30D, 31D, 32D, 33D, 34D, 35D, 36D, 37D, 38D, 39D, 40D, 41D, 42D, 43D, 44D, 45D, 46D, 47D, 48D, 49D, 50D, 51D, 52D, 53D, 54D, 55D, 56D, 57D, 58D, 59D, 60D, 61D, 62D, 63D, 64D, 65D, 66D, 67D, 68D, 69D, 70D, 71D, 72D, 73D, 74D, 75D, 76D, 77D, 78D, 79D, 80D, 81D, 82D, 83D, 84D, 85D, 86D, 87D, 88D, 89D, 90D, 91D, 92D, 93D, 94D, 95D, 96D, 97D, 98D, 99D, 100D	1D, 2D, 3D, 4D, 5D, 6D, 7D, 8D, 9D, 10D, 11D, 12D, 13D, 14D, 15D, 16D, 17D, 18D, 19D, 20D, 21D, 22D, 23D, 24D, 25D, 26D, 27D, 28D, 29D, 30D, 31D, 32D, 33D, 34D, 35D, 36D, 37D, 38D, 39D, 40D, 41D, 42D, 43D, 44D, 45D, 46D, 47D, 48D, 49D, 50D, 51D, 52D, 53D, 54D, 55D, 56D, 57D, 58D, 59D, 60D, 61D, 62D, 63D, 64D, 65D, 66D, 67D, 68D, 69D, 70D, 71D, 72D, 73D, 74D, 75D, 76D, 77D, 78D, 79D, 80D, 81D, 82D, 83D, 84D, 85D, 86D, 87D, 88D, 89D, 90D, 91D, 92D, 93D, 94D, 95D, 96D, 97D, 98D, 99D, 100D	1D, 2D, 3D, 4D, 5D, 6D, 7D, 8D, 9D, 10D, 11D, 12D, 13D, 14D, 15D, 16D, 17D, 18D, 19D, 20D, 21D, 22D, 23D, 24D, 25D, 26D, 27D, 28D, 29D, 30D, 31D, 32D, 33D, 34D, 35D, 36D, 37D, 38D, 39D, 40D, 41D, 42D, 43D, 44D, 45D, 46D, 47D, 48D, 49D, 50D, 51D, 52D, 53D, 54D, 55D, 56D, 57D, 58D, 59D, 60D, 61D, 62D, 63D, 64D, 65D, 66D, 67D, 68D, 69D, 70D, 71D, 72D, 73D, 74D, 75D, 76D, 77D, 78D, 79D, 80D, 81D, 82D, 83D, 84D, 85D, 86D, 87D, 88D, 89D, 90D, 91D, 92D, 93D, 94D, 95D, 96D, 97D, 98D, 99D, 100D	1D, 2D, 3D, 4D, 5D, 6D, 7D, 8D, 9D, 10D, 11D, 12D, 13D, 14D, 15D, 16D, 17D, 18D, 19D, 20D, 21D, 22D, 23D, 24D, 25D, 26D, 27D, 28D, 29D, 30D, 31D, 32D, 33D, 34D, 35D, 36D, 37D, 38D, 39D, 40D, 41D, 42D, 43D, 44D, 45D, 46D, 47D, 48D, 49D, 50D, 51D, 52D, 53D, 54D, 55D, 56D, 57D, 58D, 59D, 60D, 61D, 62D, 63D, 64D, 65D, 66D, 67D, 68D, 69D, 70D, 71D, 72D, 73D, 74D, 75D, 76D, 77D, 78D, 79D, 80D, 81D, 82D, 83D, 84D, 85D, 86D, 87D, 88D, 89D, 90D, 91D, 92D, 93D, 94D, 95D, 96D, 97D, 98D, 99D, 100D	1D, 2D, 3D, 4D, 5D, 6D, 7D, 8D, 9D, 10D, 11D, 12D, 13D, 14D, 15D, 16D, 17D, 18D, 19D, 20D, 21D, 22D, 23D, 24D, 25D, 26D, 27D, 28D, 29D, 30D, 31D, 32D, 33D, 34D, 35D, 36D, 37D, 38D, 39D, 40D, 41D, 42D, 43D, 44D, 45D, 46D, 47D, 48D, 49D, 50D, 51D, 52D, 53D, 54D, 55D, 56D, 57D, 58D, 59D, 60D, 61D, 62D, 63D, 64D, 65D, 66D, 67D, 68D, 69D, 70D, 71D, 72D, 73D, 74D, 75D, 76D, 77D, 78D, 79D, 80D, 81D, 82D, 83D, 84D, 85D, 86D, 87D, 88D, 89D, 90D, 91D, 92D, 93D, 94D, 95D, 96D, 97D, 98D, 99D, 100D	1D, 2D, 3D, 4D, 5D, 6D, 7D, 8D, 9D, 10D, 11D, 12D, 13D, 14D, 15D, 16D, 17D, 18D, 19D, 20D, 21D, 22D, 23D, 24D, 25D, 26D, 27D, 28D, 29D, 30D, 31D, 32D, 33D, 34D, 35D, 36D, 37D, 38D, 39D, 40D, 41D, 42D, 43D, 44D, 45D, 46D, 47D, 48D, 49D, 50D, 51D, 52D, 53D, 54D, 55D, 56D, 57D, 58D, 59D, 60D, 61D, 62D, 63D, 64D, 65D, 66D, 67D, 68D, 69D, 70D, 71D, 72D, 73D, 74D, 75D, 76D, 77D, 78D, 79D, 80D, 81D, 82D, 83D, 84D, 85D, 86D, 87D, 88D, 89D, 90D, 91D, 92D, 93D, 94D, 95D, 96D, 97D, 98D, 99D, 100D
Barcode Format	1D, 2D, 3D, 4D, 5D, 6D, 7D, 8D, 9D, 10D, 11D, 12D, 13D, 14D, 15D, 16D, 17D, 18D, 19D, 20D, 21D, 22D, 23D, 24D, 25D, 26D, 27D, 28D, 29D, 30D, 31D, 32D, 33D, 34D, 35D, 36D, 37D, 38D, 39D, 40D, 41D, 42D, 43D, 44D, 45D, 46D, 47D, 48D, 49D, 50D, 51D, 52D, 53D, 54D, 55D, 56D, 57D, 58D, 59D, 60D, 61D, 62D, 63D, 64D, 65D, 66D, 67D, 68D, 69D, 70D, 71D, 72D, 73D, 74D, 75D, 76D, 77D, 78D, 79D, 80D, 81D, 82D, 83D, 84D, 85D, 86D, 87D, 88D, 89D, 90D, 91D, 92D, 93D, 94D, 95D, 96D, 97D, 98D, 99D, 100D	1D, 2D, 3D, 4D, 5D, 6D, 7D, 8D, 9D, 10D, 11D, 12D, 13D, 14D, 15D, 16D, 17D, 18D, 19D, 20D, 21D, 22D, 23D, 24D, 25D, 26D, 27D, 28D, 29D, 30D, 31D, 32D, 33D, 34D, 35D, 36D, 37D, 38D, 39D, 40D, 41D, 42D, 43D, 44D, 45D, 46D, 47D, 48D, 49D, 50D, 51D, 52D, 53D, 54D, 55D, 56D, 57D, 58D, 59D, 60D, 61D, 62D, 63D, 64D, 65D, 66D, 67D, 68D, 69D, 70D, 71D, 72D, 73D, 74D, 75D, 76D, 77D, 78D, 79D, 80D, 81D, 82D, 83D, 84D, 85D, 86D, 87D, 88D, 89D, 90D, 91D, 92D, 93D, 94D, 95D, 96D, 97D, 98D, 99D, 100D	1D, 2D, 3D, 4D, 5D, 6D, 7D, 8D, 9D, 10D, 11D, 12D, 13D, 14D, 15D, 16D, 17D, 18D, 19D, 20D, 21D, 22D, 23D, 24D, 25D, 26D, 27D, 28D, 29D, 30D, 31D, 32D, 33D, 34D, 35D, 36D, 37D, 38D, 39D, 40D, 41D, 42D, 43D, 44D, 45D, 46D, 47D, 48D, 49D, 50D, 51D, 52D, 53D, 54D, 55D, 56D, 57D, 58D, 59D, 60D, 61D, 62D, 63D, 64D, 65D, 66D, 67D, 68D, 69D, 70D, 71D, 72D, 73D, 74D, 75D, 76D, 77D, 78D, 79D, 80D, 81D, 82D, 83D, 84D, 85D, 86D, 87D, 88D, 89D, 90D, 91D, 92D, 93D, 94D, 95D, 96D, 97D, 98D, 99D, 100D	1D, 2D, 3D, 4D, 5D, 6D, 7D, 8D, 9D, 10D, 11D, 12D, 13D, 14D, 15D, 16D, 17D, 18D, 19D, 20D, 21D, 22D, 23D, 24D, 25D, 26D, 27D, 28D, 29D, 30D, 31D, 32D, 33D, 34D, 35D, 36D, 37D, 38D, 39D, 40D, 41D, 42D, 43D, 44D, 45D, 46D, 47D, 48D, 49D, 50D, 51D, 52D, 53D, 54D, 55D, 56D, 57D, 58D, 59D, 60D, 61D, 62D, 63D, 64D, 65D, 66D, 67D, 68D, 69D, 70D, 71D, 72D, 73D, 74D, 75D, 76D, 77D, 78D, 79D, 80D, 81D, 82D, 83D, 84D, 85D, 86D, 87D, 88D, 89D, 90D, 91D, 92D, 93D, 94D, 95D, 96D, 97D, 98D, 99D, 100D	1D, 2D, 3D, 4D, 5D, 6D, 7D, 8D, 9D, 10D, 11D, 12D, 13D, 14D, 15D, 16D, 17D, 18D, 19D, 20D, 21D, 22D, 23D, 24D, 25D, 26D, 27D, 28D, 29D, 30D, 31D, 32D, 33D, 34D, 35D, 36D, 37D, 38D, 39D, 40D, 41D, 42D, 43D, 44D, 45D, 46D, 47D, 48D, 49D, 50D, 51D, 52D, 53D, 54D, 55D, 56D, 57D, 58D, 59D, 60D, 61D, 62D, 63D, 64D, 65D, 66D, 67D, 68D, 69D, 70D, 71D, 72D, 73D, 74D, 75D, 76D, 77D, 78D, 79D, 80D, 81D, 82D, 83D, 84D, 85D, 86D, 87D, 88D, 89D, 90D, 91D, 92D, 93D, 94D, 95D, 96D, 97D, 98D, 99D, 100D	1D, 2D, 3D, 4D, 5D, 6D, 7D, 8D, 9D, 10D, 11D, 12D, 13D, 14D, 15D, 16D, 17D, 18D, 19D, 20D, 21D, 22D, 23D, 24D, 25D, 26D, 27D, 28D, 29D, 30D, 31D, 32D, 33D, 34D, 35D, 36D, 37D, 38D, 39D, 40D, 41D, 42D, 43D, 44D, 45D, 46D, 47D, 48D, 49D, 50D, 51D, 52D, 53D, 54D, 55D, 56D, 57D, 58D, 59D, 60D, 61D, 62D, 63D, 64D, 65D, 66D, 67D, 68D, 69D, 70D, 71D, 72D, 73D, 74D, 75D, 76D, 77D, 78D, 79D, 80D, 81D, 82D, 83D, 84D, 85D, 86D, 87D, 88D, 89D, 90D, 91D, 92D, 93D, 94D, 95D, 96D, 97D, 98D, 99D, 100D
Barcode Format	1D, 2D, 3D, 4D, 5D, 6D, 7D, 8D, 9D, 10D, 11D, 12D, 13D, 14D, 15D, 16D, 17D, 18D, 19D, 20D, 21D, 22D, 23D, 24D, 25D, 26D, 27D, 28D, 29D, 30D, 31D, 32D, 33D, 34D, 35D, 36D, 37D, 38D, 39D, 40D, 41D, 42D, 43D, 44D, 45D, 46D, 47D, 48D, 49D, 50D, 51D, 52D, 53D, 54D, 55D, 56D, 57D, 58D, 59D, 60D, 61D, 62D, 63D, 64D, 65D, 66D, 67D, 68D, 69D, 70D, 71D, 72D, 73D, 74D, 75D, 76D, 77D, 78D, 79D, 80D, 81D, 82D, 83D, 84D, 85D, 86D, 87D, 88D, 89D, 90D, 91D, 92D, 93D, 94D, 95D, 96D, 97D, 98D, 99D, 100D	1D, 2D, 3D, 4D, 5D, 6D, 7D, 8D, 9D, 10D, 11D, 12D, 13D, 14D, 15D, 16D, 17D, 18D, 19D, 20D, 21D, 22D, 23D, 24D, 25D, 26D, 27D, 28D, 29D, 30D, 31D, 32D, 33D, 34D, 35D, 36D, 37D, 38D, 39D, 40D, 41D, 42D, 43D, 44D, 45D, 46D, 47D, 48D, 49D, 50D, 51D, 52D, 53D, 54D, 55D, 56D, 57D, 58D, 59D, 60D, 61D, 62D, 63D, 64D, 65D, 66D, 67D, 68D, 69D, 70D, 71D, 72D, 73D, 74D, 75D, 76D, 77D, 78D, 79D, 80D, 81D, 82D, 83D, 84D, 85D, 86D, 87D, 88D, 89D, 90D, 91D, 92D, 93D, 94D, 95D, 96D, 97D, 98D, 99D, 100D	1D, 2D, 3D, 4D, 5D, 6D, 7D, 8D, 9D, 10D, 11D, 12D, 13D, 14D, 15D, 16D, 17D, 18D, 19D, 20D, 21D, 22D, 23D, 24D, 25D, 26D, 27D, 28D, 29D, 30D, 31D, 32D, 33D, 34D, 35D, 36D, 37D, 38D, 39D, 40D, 41D, 42D, 43D, 44D, 45D, 46D, 47D, 48D, 49D, 50D, 51D, 52D, 53D, 54D, 55D, 56D, 57D, 58D, 59D, 60D, 61D, 62D, 63D, 64D, 65D, 66D, 67D, 68D, 69D, 70D, 71D, 72D, 73D, 74D, 75D, 76D, 77D, 78D, 79D, 80D, 81D, 82D, 83D, 84D, 85D, 86D, 87D, 88D, 89D, 90D, 91D, 92D, 93D, 94D, 95D, 96D, 97D, 98D, 99D, 100D	1D, 2D, 3D, 4D, 5D, 6D, 7D, 8D, 9D, 10D, 11D, 12D, 13D, 14D, 15D, 16D, 17D, 18D, 19D, 20D, 21D, 22D, 23D, 24D, 25D, 26D, 27D, 28D, 29D, 30D, 31D, 32D, 33D, 34D, 35D, 36D, 37D, 38D, 39D, 40D, 41D, 42D, 43D, 44D, 45D, 46D, 47D, 48D, 49D, 50D, 51D, 52D, 53D, 54D, 55D, 56D, 57D, 58D, 59D, 60D, 61D, 62D, 63D, 64D, 65D, 66D, 67D, 68D, 69D, 70D, 71D, 72D, 73D, 74D, 75D, 76D, 77D, 78D, 79D, 80D, 81D, 82D, 83D, 84D, 85D, 86D, 87D, 88D, 89D, 90D, 91D, 92D, 93D, 94D, 95D, 96D, 97D, 98D, 99D, 100D	1D, 2D, 3D, 4D, 5D, 6D, 7D, 8D, 9D, 10D, 11D, 12D, 13D, 14D, 15D, 16D, 17D, 18D, 19D, 20D, 21D, 22D, 23D, 24D, 25D, 26D, 27D, 28D, 29D, 30D, 31D, 32D, 33D, 34D, 35D, 36D, 37D, 38D, 39D, 40D, 41D, 42D, 43D, 44D, 45D, 46D, 47D, 48D, 49D, 50D, 51D, 52D, 53D, 54D, 55D, 56D, 57D, 58D, 59D, 60D, 61D, 62D, 63D, 64D, 65D, 66D, 67D, 68D, 69D, 70D, 71D, 72D, 73D, 74D, 75D, 76D, 77D, 78D, 79D, 80D, 81D, 82D, 83D, 84D, 85D, 86D, 87D, 88D, 89D, 90D, 91D, 92D, 93D, 94D, 95D, 96D, 97D, 98D, 99D, 100D	1D, 2D, 3D, 4D, 5D, 6D, 7D, 8D, 9D, 10D, 11D, 12D, 13D, 14D, 15D, 16D, 17D, 18D, 19D, 20D, 21D, 22D, 23D, 24D, 25D, 26D, 27D, 28D, 29D, 30D, 31D, 32D, 33D, 34D, 35D, 36D, 37D, 38D, 39D, 40D, 41D, 42D, 43D, 44D, 45D, 46D, 47D, 48D, 49D, 50D, 51D, 52D, 53D, 54D, 55D, 56D, 57D, 58D, 59D, 60D, 61D, 62D, 63D, 64D, 65D, 66D, 67D, 68D, 69D, 70D, 71D, 72D, 73D, 74D, 75D, 76D, 77D, 78D, 79D, 80D, 81D, 82D, 83D, 84D, 85D, 86D, 87D, 88D, 89D, 90D, 91D, 92D, 93D, 94D, 95D, 96D, 97D, 98D, 99D, 100D
Barcode Format	1D, 2D, 3D, 4D, 5D, 6D, 7D, 8D, 9D, 10D, 11D, 12D, 13D, 14D, 15D, 16D, 17D, 18D, 19D, 20D, 21D, 22D, 23D, 24D, 25D, 26D, 27D, 28D, 29D, 30D, 31D, 32D, 33D, 34D, 35D, 36D, 37D, 38D, 39D, 40D, 41D, 42D, 43D, 44D, 45D, 46D, 47D, 48D, 49D, 50D, 51D, 52D, 53D, 54D, 55D, 56D, 57D, 58D, 59D, 60D, 61D, 62D, 63D, 64D, 65D, 66D, 67D, 68D, 69D, 70D, 71D, 72D, 73D, 74D, 75D, 76D, 77D, 78D, 79D, 80D, 81D, 82D, 83D, 84D, 85D, 86D, 87D, 88D, 89D, 90D, 91D, 92D, 93D, 94D, 95D, 96D, 97D, 98D, 99D, 100D	1D, 2D, 3D, 4D, 5D, 6D, 7D, 8D, 9D, 10D, 11D, 12D, 13D, 14D, 15D, 16D, 17D, 18D, 19D, 20D, 21D, 22D, 23D, 24D, 25D, 26D, 27D, 28D, 29D, 30D, 31D, 32D, 33D, 34D, 35D, 36D, 37D, 38D, 39D, 40D, 41D, 42D, 43D, 44D, 45D, 46D, 47D, 48D, 49D, 50D, 51D, 52D, 53D, 54D, 55D, 56D, 57D, 58D, 59D, 60D, 61D, 62D, 63D, 64D, 65D, 66D, 67D, 68D, 69D, 70D, 71D, 72D, 73D, 74D, 75D, 76D, 77D, 78D, 79D, 80D, 81D, 82D, 83D, 84D, 85D, 86D, 87D, 88D, 89D, 90D, 91D, 92D, 93D, 94D, 95D, 96D, 97D, 98D, 99D, 100D	1D, 2D, 3D, 4D, 5D, 6D, 7D, 8D, 9D, 10D, 11D, 12D, 13D, 14D, 15D, 16D, 17D, 18D, 19D, 20D, 21D, 22D, 23D, 24D, 25D, 26D, 27D, 28D, 29D, 30D, 31D, 32D, 33D, 34D, 35D, 36D, 37D, 38D, 39D, 40D, 41D, 42D, 43D, 44D, 45D, 46D, 47D, 48D, 49D, 50D, 51D, 52D, 53D, 54D, 55D, 56D, 57D, 58D, 59D, 60D, 61D, 62D, 63D, 64D, 65D, 66D, 67D, 68D, 69D, 70D, 71D, 72D, 73D, 74D, 75D, 76D, 77D, 78D, 79D, 80D, 81D, 82D, 83D, 84D, 85D, 86D, 87D, 88D, 89D, 90D, 91D, 92D, 93D, 94D, 95D, 96D, 97D, 98D, 99D, 100D	1D, 2D, 3D, 4D, 5D, 6D, 7D, 8D, 9D, 10D, 11D, 12D, 13D, 14D, 15D, 16D, 17D, 18D, 19D, 20D, 21D, 22D, 23D, 24D, 25D, 26D, 27D, 28D, 29D, 30D, 31D, 32D, 33D, 34D, 35D, 36D, 37D, 38D, 39D, 40D, 41D, 42D, 43D, 44D, 45D, 46D, 47D, 48D, 49D, 50D, 51D, 52D, 53D, 54D, 55D, 56D, 57D, 58D, 59D, 60D, 61D, 62D, 63D, 64D, 65D, 66D, 67D, 68D, 69D, 70D, 71D, 72D, 73D, 74D, 75D, 76D, 77D, 78D, 79D, 80D, 81D, 82D, 83D, 84D, 85D, 86D, 87D, 88D, 89D, 90D, 91D, 92D, 93D, 94D, 95D, 96D, 97D, 98D, 99D, 100D	1D, 2D, 3D, 4D, 5D, 6D, 7D, 8D, 9D, 10D, 11D, 12D, 13D, 14D, 15D, 16D, 17D, 18D, 19D, 20D, 21D, 22D, 23D, 24D, 25D, 26D, 27D, 28D, 29D, 30D, 31D, 32D, 33D, 34D, 35D, 36D, 37D, 38D, 39D, 40D, 41D, 42D, 43D, 44D, 45D, 46D, 47D, 48D, 49D, 50D, 51D, 52D, 53D, 54D, 55D, 56D, 57D, 58D, 59D, 60D, 61D, 62D, 63D, 64D, 65D, 66D, 67D, 68D, 69D, 70D, 71D, 72D, 73D, 74D, 75D, 76D, 77D, 78D, 79D, 80D, 81D, 82D, 83D, 84D, 85D, 86D, 87D, 88D, 89D, 90D, 91D, 92D, 93D, 94D, 95D, 96D, 97D, 98D, 99D, 100D	1D, 2D, 3D, 4D, 5D, 6D, 7D, 8D, 9D, 10D, 11D, 12D, 13D, 14D, 15D, 16D, 17D, 18D, 19D, 20D, 21D, 22D, 23D, 24D, 25D, 26D, 27D, 28D, 29D, 30D, 31D, 32D, 33D, 34D, 35D, 36D, 37D, 38D, 39D, 40D, 41D, 42D, 43D, 44D, 45D, 46D, 47D, 48D, 49D, 50D, 51D, 52D, 53D, 54D, 55D, 56D, 57D, 58D, 59D, 60D, 61D, 62D, 63D, 64D, 65D, 66D, 67D, 68D, 69D, 70D, 71D, 72D, 73D, 74D, 75D, 76D, 77D, 78D, 79D, 80D, 81D, 82D, 83D, 84D, 85D, 86D, 87D, 88D, 89D, 90D, 91D, 92D, 93D, 94D, 95D, 96D, 97D, 98D, 99D, 100D
Barcode Format	1D, 2D, 3D, 4D, 5D, 6D, 7D, 8D, 9D, 10D, 11D, 12D, 13D, 14D, 15D, 16D, 17D, 18D, 19D, 20D, 2					

Specifications:

Model	Dimensions	Weight
SampleScan 96 BML-1-SS96	16.9" D x 11.2" L x 1.6" H (43 cm x 29 cm x 4 cm)	6 lbs. (2.72 kg)
SampleScan 96 Cryo BML-1CR-SS96	16.9" D x 11.2" L x 1.6" H (43 cm x 29 cm x 4 cm)	6 lbs. (2.72 kg)
SampleScan 96 Automated Includes Rack ID Scanner BML-1-SS96-1D	16.9" D x 14.2" L x 4.6" H (43 cm x 36 cm x 12 cm)	7 lbs. (3.18 kg)
Electrical: 100-240VAC ~ 50/60Hz, 1.25A; Universal power supply with US, UK, Euro or user specified Environment: 50° to 95° F (10° to 35° C) System Requirements: Windows 10, 8, 7 – One 2.0 USB port (Base), Two 2.0 USB ports (Automated)		
All SampleScan Barcode Readers Include a 5 Year Warranty		



BioMicroLab provides automation solutions for tube and vial handling, liquid handling, capping/decapping, labeling, volume detection, and 2D barcode readers for pharmaceutical, biotech, agricultural and research laboratories worldwide. We have a no-compromise commitment to equipping our customers with innovative and world-class sample management tools.

BioMicroLab, Inc.
2500-A Dean Lesher Dr.
Concord, CA 94520

Tel: 925-689-1200
Email: sales@biomicrolab.com
www.biomicrolab.com

BioMicroLab