

GeneMarker®MTP Quick Start Guide

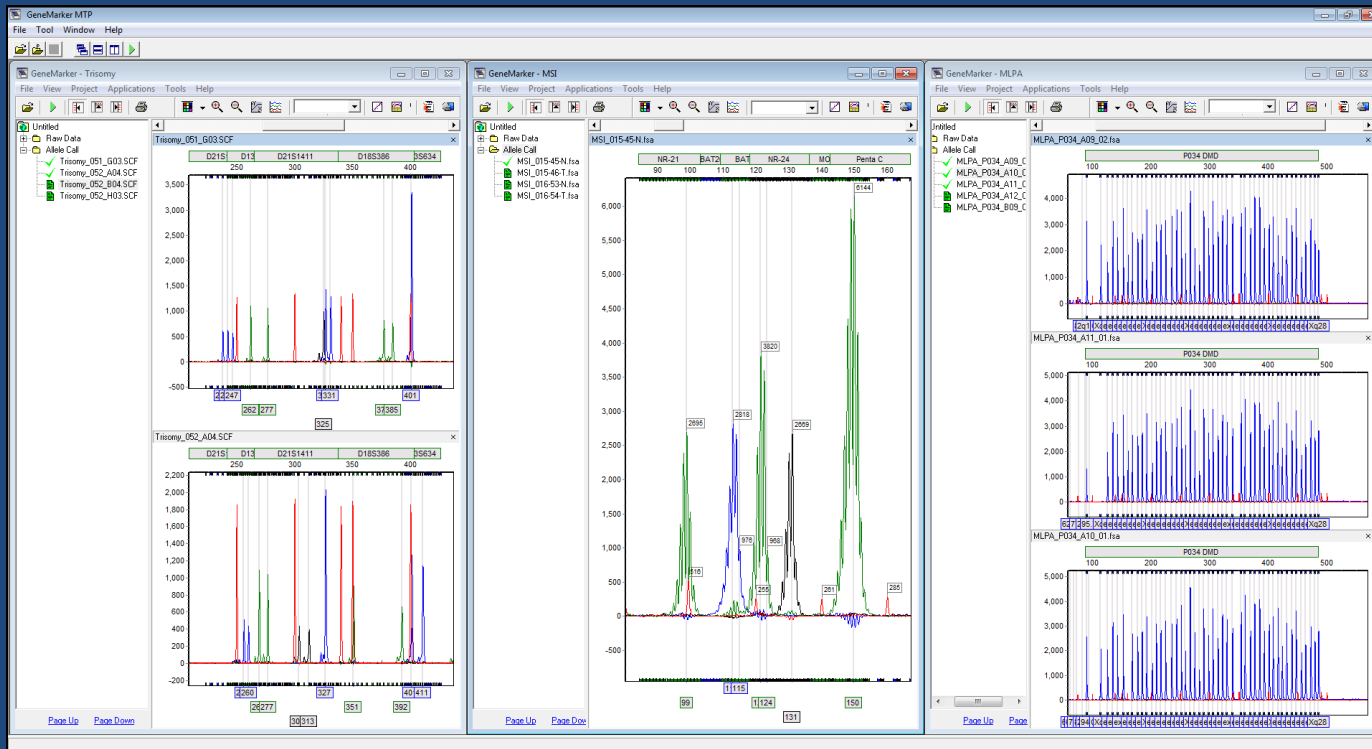
SoftGenetics 2013



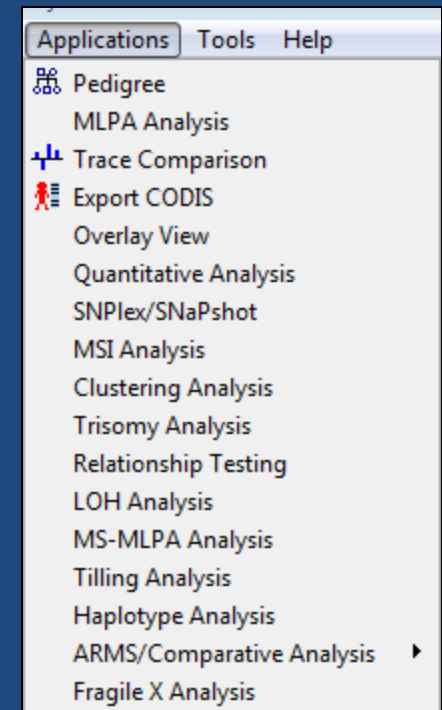
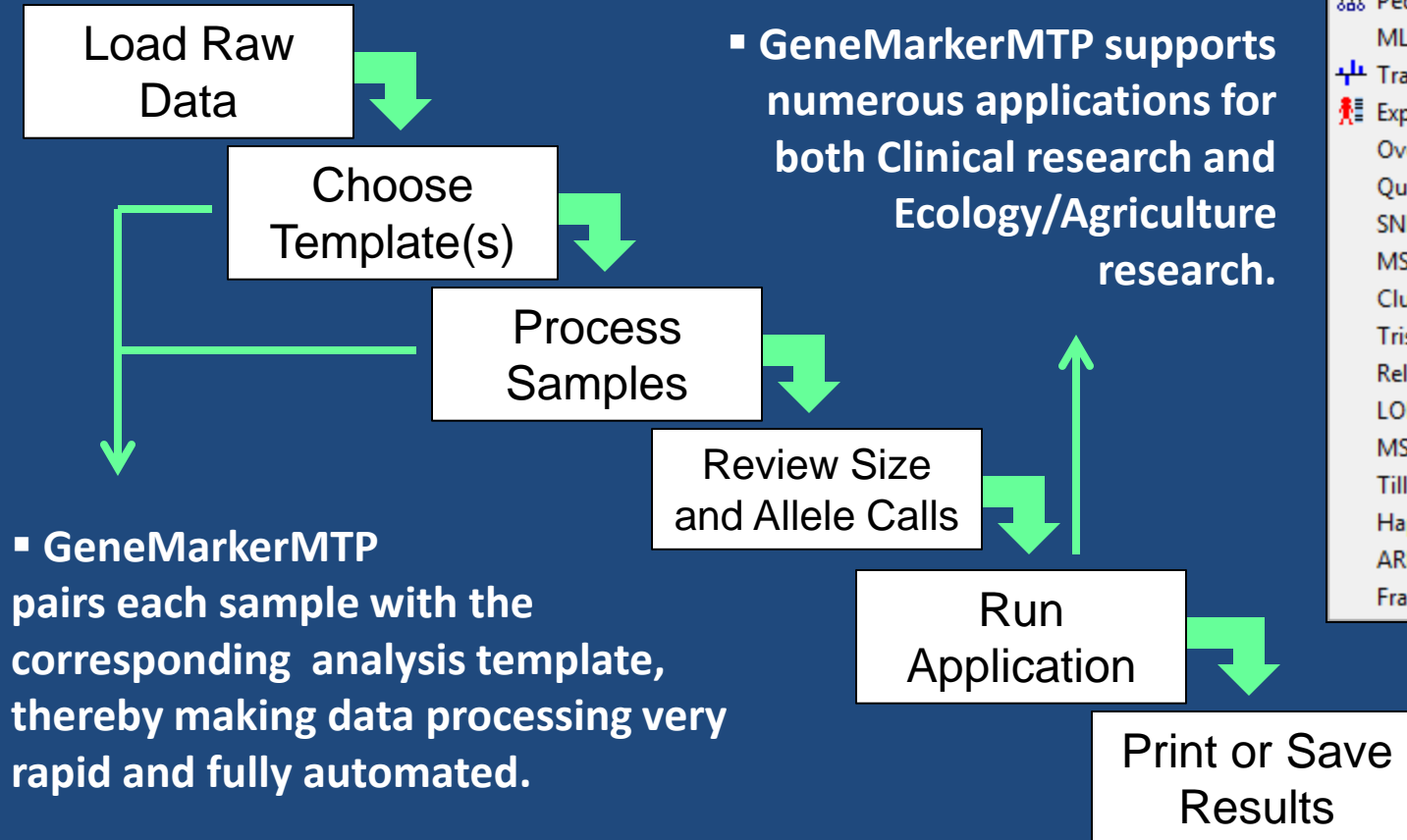
GeneMarker®MTP:

Reduce Costs While Increasing Throughput

- Analyze samples amplified with up to 6 different chemistries simultaneously.
- Analysis templates are automatically assigned to the corresponding samples.
- Linked navigation for reviewing results of multiple projects in the same screen.
- Easily make custom templates for different analysis types (Fragile X, Trisomy, MLPA®, AFLP, Microsatellite, MSI....).

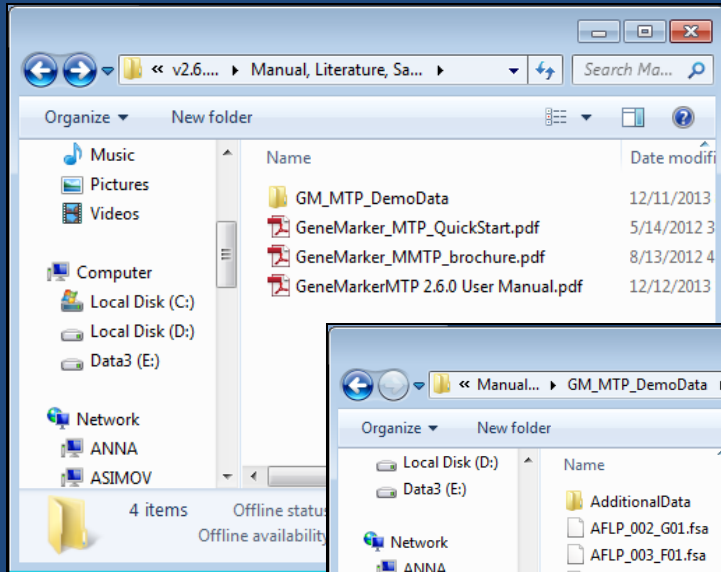


GeneMarkerMTP Workflow:

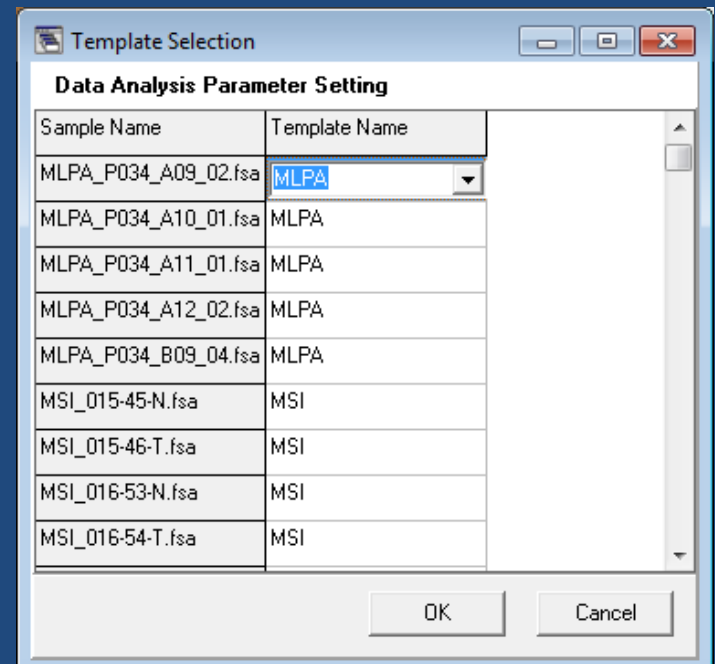
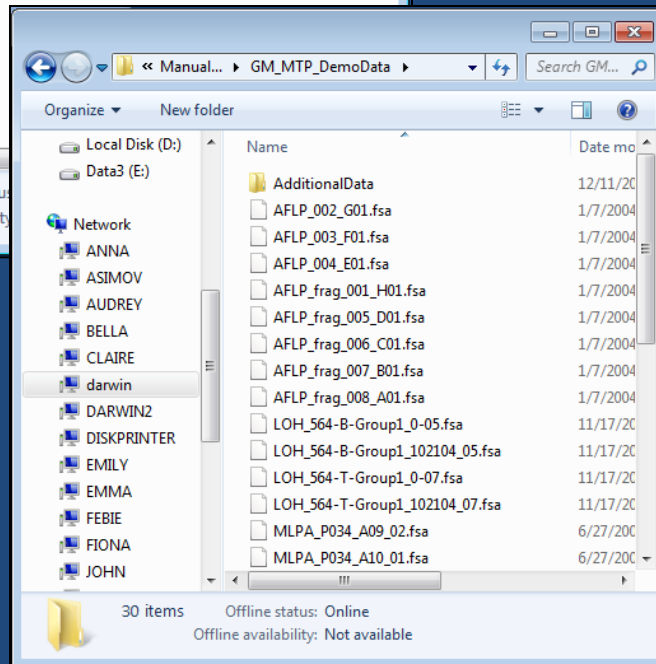


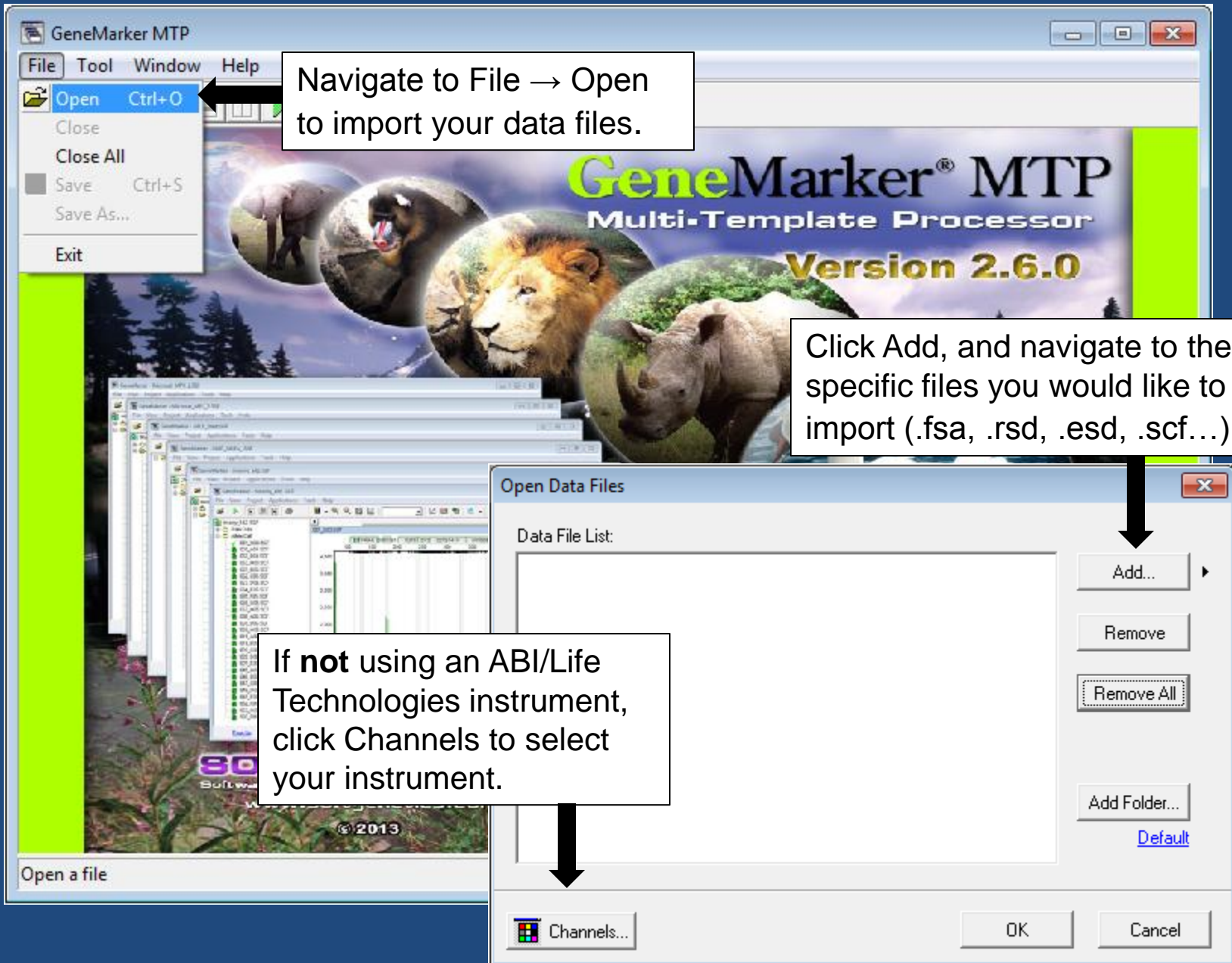
How to Use This Guide

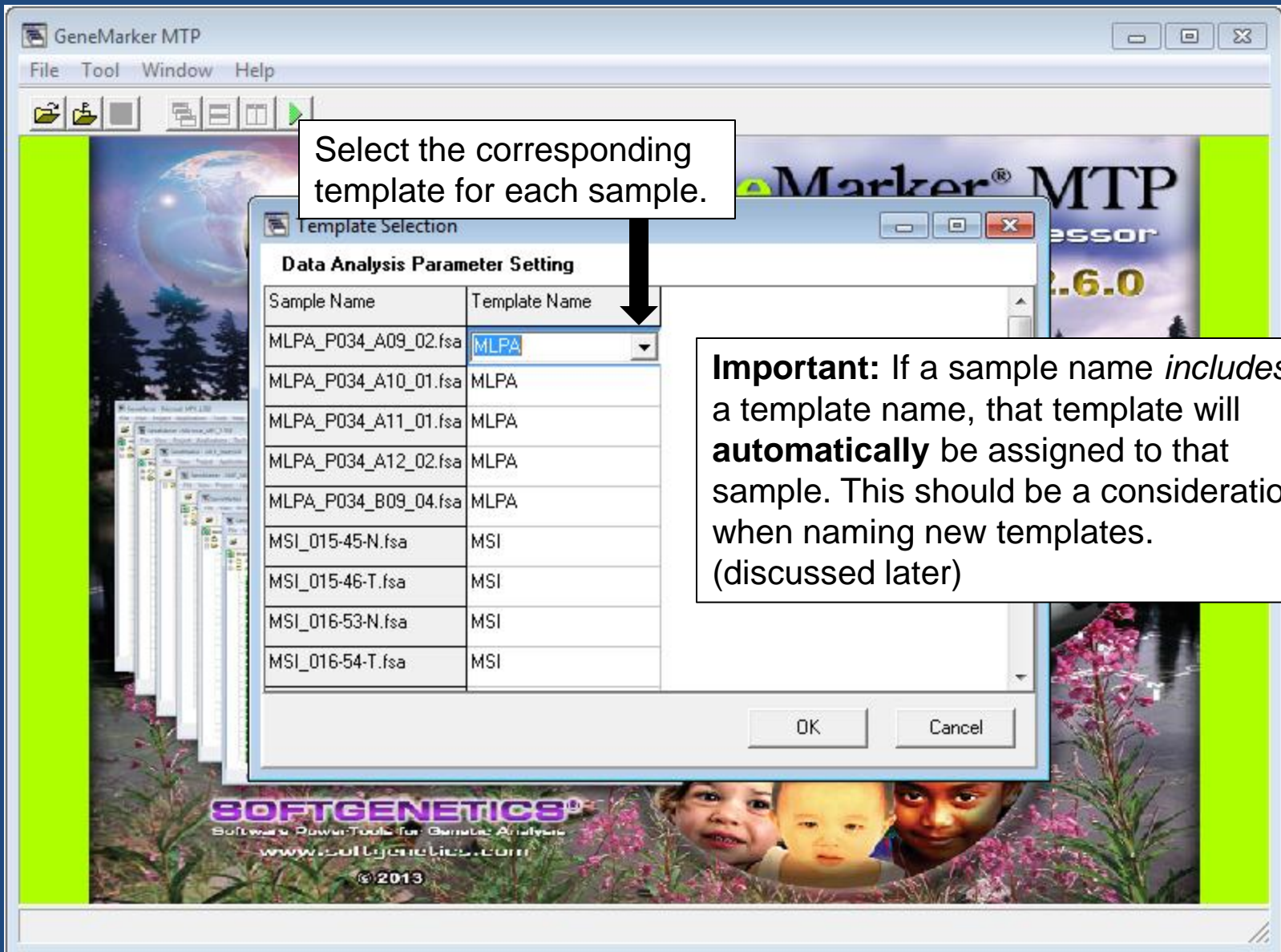
- The GeneMarkerMTP disc is preloaded with several sets of sample data. You are encouraged to try a few initial runs with these samples to aid in learning the basic operation of the program.



- Preloaded analysis templates are available for each data set. While following this guide, observe how multiple chemistries may be loaded simultaneously, and how GeneMarkerMTP correctly associates each sample with the correct template.
- See the next slides for more details







Use the navigation buttons to quickly arrange windows.

The screenshot displays the GeneMarker MTP software interface with several windows open. The 'GeneMarker - Trisomy' window is in the background. The 'GeneMarker - MSI' window is in the middle ground. The 'GeneMarker - MLPA' window is in the foreground, showing a menu with options like 'Pedigree', 'MLPA Analysis', 'Trace Comparison', 'Export CODIS', 'Overlay View', 'Quantitative Analysis', 'SNPlex/SNaPshot', 'MSI Analysis', 'Clustering Analysis', 'Trisomy Analysis', 'Relationship Testing', 'LOH Analysis', 'MS-MLPA Analysis', 'Tilling Analysis', 'Haplotype Analysis', 'ARMS/Comparative Analysis', and 'Fragile X Analysis'. The 'MLPA Analysis' option is highlighted. The 'Report' window is on the right, showing a table of results. The 'Bin' window is at the bottom, showing a chromatogram plot with peaks labeled with numbers. The 'Page Up' and 'Page Down' buttons are visible at the bottom of the 'Bin' window.

Processed samples will be organized into projects based on their Analysis Template.

Review the processed data, proceed to a post-genotyping application, and/or export the results.

		P034 DMD	P034 DMD	P034 DMD	P034 DMD	P034 DMD
		2q14	ChrY	Xq11.2	ex01	ex4
1	MLPA_P034_A09_0	1#21098	1#14503	1#10824	1#21415	1#1
2	MLPA_P034_A10_0	1#16675	1#13611	1#13499	1#20939	1#1
3	MLPA_P034_A11_0	1#8553	0#0	1#13187	1#21367	1#1
4	MLPA_P034_A12_0	1#14852	1#11477	0#0	1#20888	1#1
5	MLPA_P034_B09_0	1#31	0#0	0#0	0#0	0#0

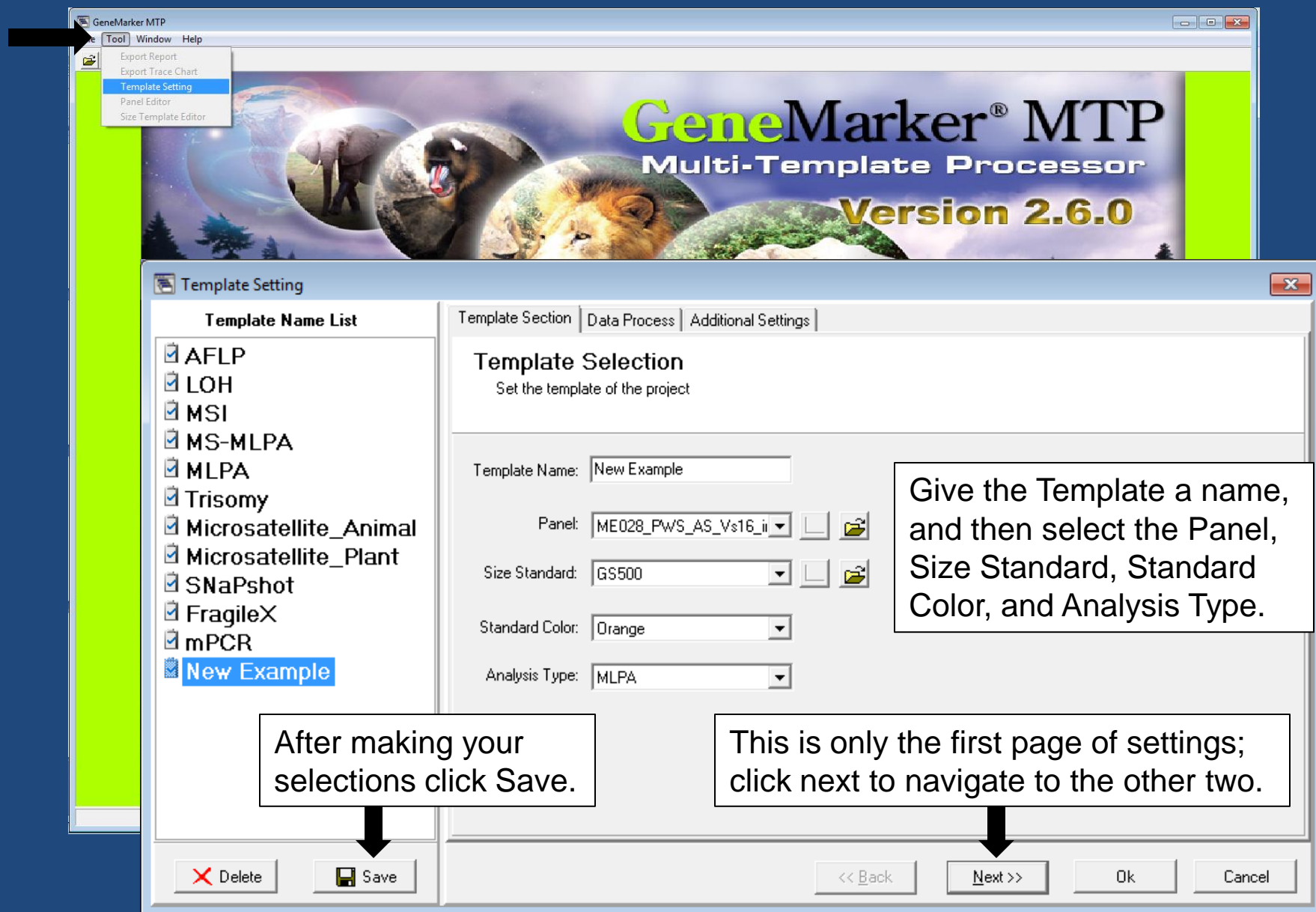
To save a project in its entirety, simply navigate to File → Save Project.

The screenshot shows the GeneMarker - Trisomy application window. The 'File' menu is open, and 'Save Project' is highlighted. The main window displays a plot for 'Trisomy_052_A04.SCF' with a y-axis ranging from -200 to 2,100. A 'Report' table is visible on the right, showing data for various samples. A 'GeneMarker MTP' window is overlaid on the plot, showing a folder icon with a 'P' and an upward arrow pointing to the 'Save Project' option in the main window's File menu.



		D21S1437		D21S11		D18S33
1	Trisomy_051_G03	115	127	238	242	247
2	Trisomy_052_A04	127	131	257	260	327
3	Trisomy_052_B04	127	131	257	260	327
4	Trisomy_052_H03	127	131	257	260	327

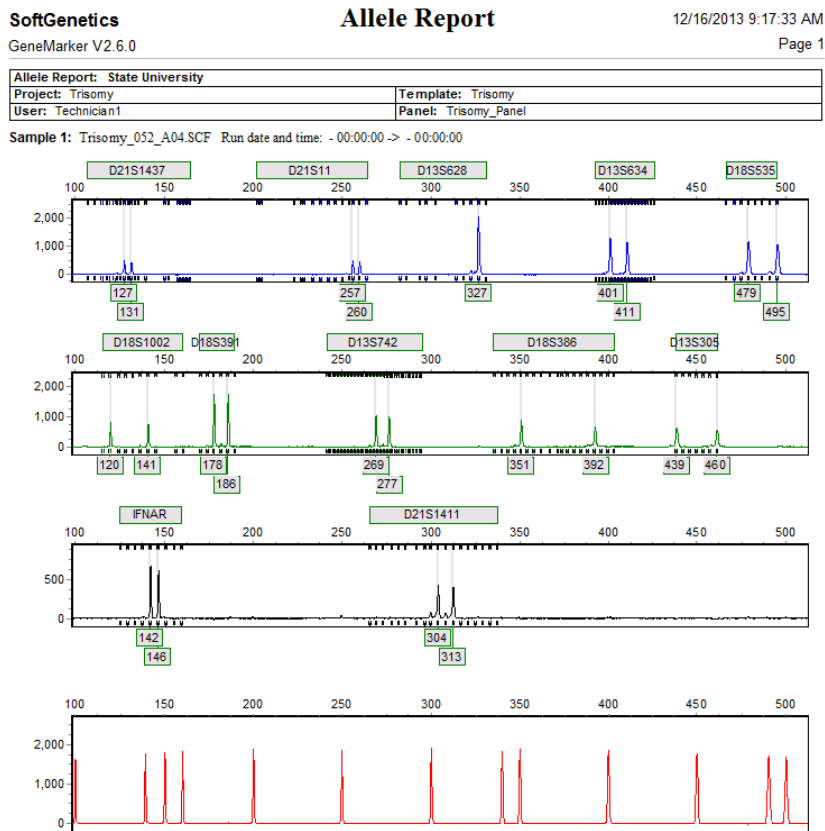
Later, the project may be reopened by clicking the Folder Icon with a P.

Creating specialized templates is an important aspect of GeneMarker MTP. To create a new template, navigate to Tool → Template Settings.

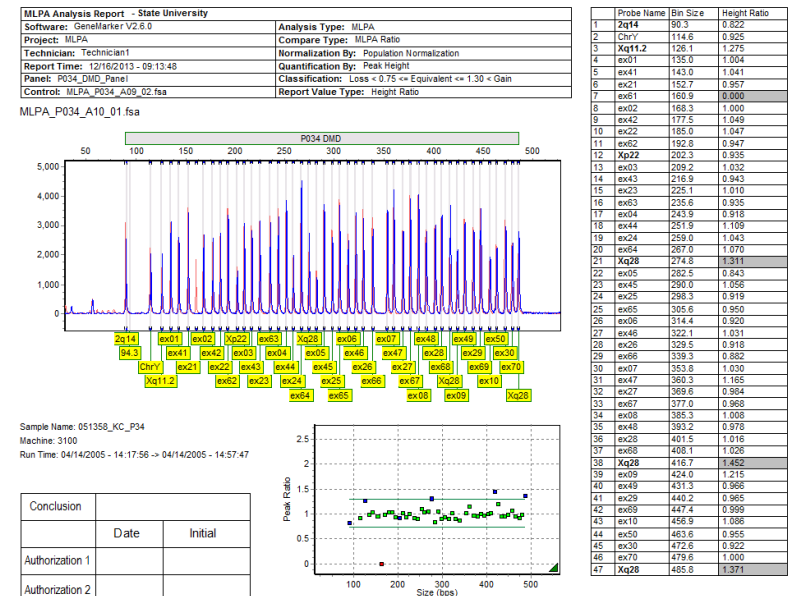


GeneMarkerMTP Supports Numerous Reporting Options

- In the main analysis window, or in a specific application (Trisomy, MLPA, etc) simply use the printer icon:  to preview a print report. These reports can be extensively customized, and may be printed directly or saved digitally using the save icon: 



A typical print report from one of the many post-genotyping applications (MLPA).



Need Assistance?

Please Email: tech_support@softgenetics.com

Or Please Call: 814-237-9340

Use the link below to view Webinars covering the basics of GeneMarkerMTP as well as advanced topics (Fragile X, MLPA, Trisomy, etc.):

<http://www.softgenetics.com/analysisCorner.html>

GeneMarker[®]MTP
Multi-Template Processor

Trade marks are the property of their respective owners. Research use only (RUO).